

## CJX2-D AC series contactor



CJX2-09



CJX2-32



CJX2-80

### Application

CJX2-D series AC contactor is suitable for using in the circuits of rated voltage up to 660V, AC 50Hz or 60Hz, rated current up to 95A, for making, breaking, frequently starting & controlling the AC motor. Combined with the auxiliary contact block, timer delay & mechanical-interlocking device etc, it will form into delay contactor, mechanical interlocking contactor, star-delta starter. With the thermal relay, it will form into electromagnetic starter. The contactor is produced according to IEC 947-2, VDE0660 & BS5452.

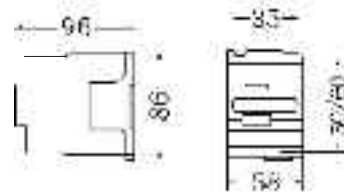
### Specification

Type		CJX2-09	CJX2-12	CJX2-18	CJX2-25	CJX2-32
Rated operation current(A)	AC3	9	12	18	25	32
	AC4	3.5	5	7.7	8.5	12
AC3 capacity of phase 3 squirrel-cage motor AC3(kW)	220/230V	2.2	3	4	5.5	7.5
	380/400V	4	5.5	7.5	11	15
	415V	4	5.5	9	11	15
	440V	4	5.5	9	11	15
	500V	5.5	7.5	10	15	18.5
	660/690V	5.5	7.5	10	15	18.5
Rated thermal current(A)		20	20	32	40	50
Electrical life	AC4×10 <sup>4</sup>	2	20-15	20-7	15-7	15-7
	AC3×10 <sup>6</sup>	02	2	2	2	2
Mechanical life		20	20	20	20	20
Contact number		3P+NC+NO				

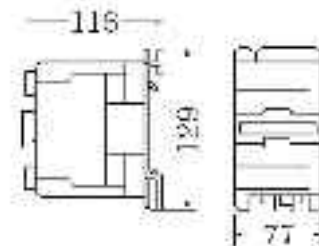
Type		CJX2-40	CJX2-50	CJX2-65	CJX2-80	CJX2-95
Rated operation current(A)	AC3	40	50	65	80	95
	AC4	18.5	24	28	37	44
AC3 capacity of phase 3 squirrel-cage motor AC3(kW)	220/230V	11	15	18.5	22	25
	380/400V	18.5	22	30	37	45
	415V	22	25	37	45	45
	440V	22	30	37	45	45
	500V	22	30	37	55	55
	660/690V	30	33	37	45	45
Rated thermal current(A)		60	80	80	125	125
Electrical life time	AC4×10 <sup>4</sup>	10-7	7	7-6	7-5	7-5
	AC3×10 <sup>6</sup>	2	2	1.6	1.6	1.6
Mechanical life		20	20	20	10	10
Contact number		3P+NC+NO				

Volts (VAC)	24	42	48	110	220/230	240	380/400	400	415	440	500	660	
50Hz	B5	D5	E5	F5	M5	P5	U5	Q5	V5	N5	R5	S5	Y5
60Hz	B6	D6	E6	F6	M6	-	U6	Q6	-	-	R6	-	-
50/60Hz	B7	D7	E7	F7	M7	P7	U7	Q7	V7	N7	R7	-	-

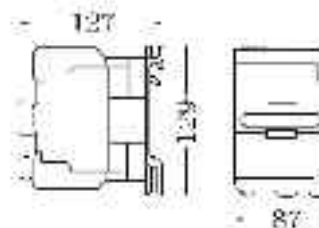
### Contour and installation dimension



CJX2-32



CJX2-40,50,63



CJX2-80,95

## CJX2-P series DC operated AC contactor



### Application

CJX2-P Series DC operated contactor is suitable for the circuit of rated voltage up to 660V AC 50Hz/60Hz, and rated current from 9-95A in AC -3/380V load circuits, for remote control of circuit, making, breaking and frequent starting AC motors. It can also be combined with the auxiliary contact group, air time-delay switch, thermal relay devices etc.

### Specification

Type	Rated working current (A) Ie(A) (AC-3)	Rated heat current Ith(A)	Rated working voltage Ue(A)	Rated insulating voltage Ui(A)	Control power (KW)					Electrical life (AC-3)	Contact number
					220V	380V	415V	440V	660V		
CJX2-P09	9	20	380V 660V	660V	2.2	4	4	4	5.5	100	3P+NO
CJX2-P12	12	20			3	5.5	5.5	5.5	7.5	100	
CJX2-P18	18	32			4	7.5	9	9	9	100	
CJX2-P25	25	40			5.5	11	11	11	15	100	3P+NC
CJX2-P32	32	50			7.5	15	15	15	18.5	80	3P+NO
CJX2-P40	40	60			11	18.5	22	22	30	80	
CJX2-P50	50	80			15	22	25	30	33	60	
CJX2-P65	65	80			18.5	30	37	37	37	60	+NC
CJX2-P80	80	125			22	37	45	45	45	60	
CJX2-P98	95	125			25	45	45	45	45	60	

## CJX2-K CJX2-E series AC contactor



### Specification

Type	CJX2-K0610 CJX2-K0601 CJX2-K06004 CJX2-K06008	CJX2-K0910 CJX2-K0901 CJX2-K09004 CJX2-K09008	CJX2-K1210 CJX2-K1201 CJX2-K12004 CJX2-K12008	CJX2-E0610 CJX2-E0601 CJX2-E06008	CJX2-E0910 CJX2-E0901 CJX2-E09008		
Rated working voltage(V)	660(690)						
Rated working current(A)	380V	AC-3	6	9	12	6	9
		AC-4	2.6	3.5	5	2.6	3.5
Rated heating current (A)	16						
Max connecting current(A)	380V	60	90	120	60	90	
	660V	72	108	144	72	108	
Max breaking current(A)	380V	48	72	96	48	72	
	660V	60	90	120	60	90	
AC3 capacity of 3 phase squirrel-cage motor AC-3(kW)	220V	1.5	2.2	3	1.5	2.2	
	380V	2.2	4	5.5	2.2	4	
	660V	3	4	5.5	3	4	
Operation frequency time/h	Electrical life	AC-3	1200				
		AC-4	300				
Electrical life × 10 <sup>4</sup>	AC-3	100					
	AC-4	20					
Mechanical life	× 10 <sup>4</sup>	1000					
Wiring(mm)	2.5						
Equipped fuse	RT16-20	RT16-20		RTOO-16			
Contacts number	3P+NO 3P+NC 4NO 2NO+ 2NC	3P+NO 3P+NC 4NO 2NO+ 2NC	3P+NO 3P+NC 4NO 2NO+ 2NC	3P+NO 3P+NC 2NO+ 2NC	3P+NO 3P+NC 2NO+ 2NC		

## CJX2-F series AC contactor



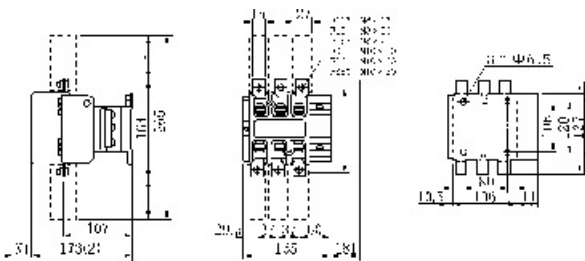
### Application

CJX2-F series AC contactor is mainly used in the electric power system of AC 50Hz or 60Hz, voltage up to 600V, current up to 800A, for long distance making and breaking the circuit. It also can be used for frequently controlling AC motor and formed into electromagnetic starter with thermal relay for protecting the circuit from the problem.

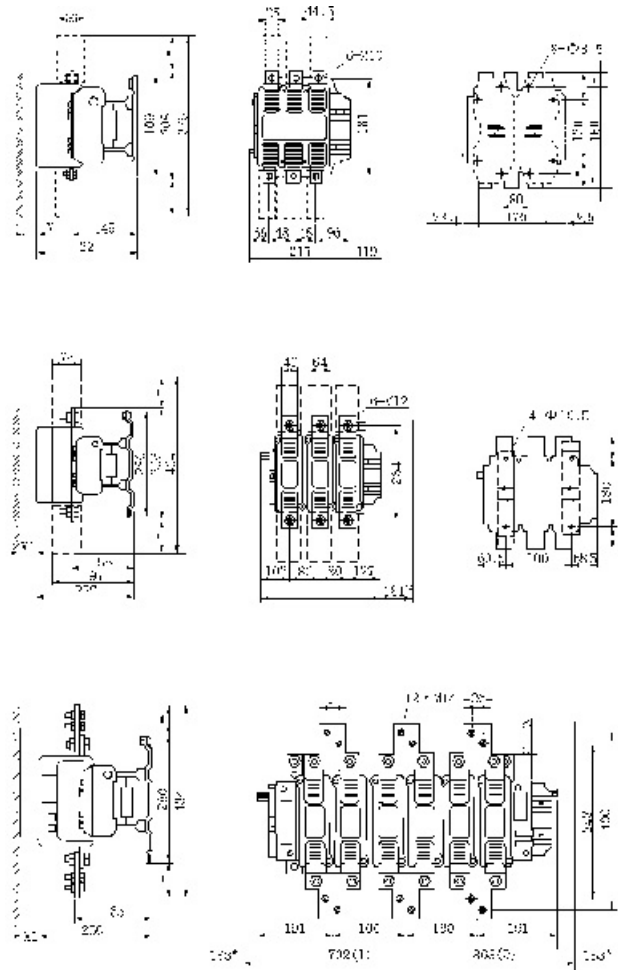
### Model and meaning

Type	Rated operation current		Rated control power							Weight
	AC1 (0<40°C)	380V (AC3)	220V	380V	415V	440V	500V	660V	1000V	
CJX2-F115	200	115	30	55	59	59	75	80	65	3.0
CJX2-F150	250	150	40	75	80	80	90	100	65	3.0
CJX2-F185	275	185	55	90	100	100	110	110	100	4.1
CJX2-F225	315	225	59	110	110	110	129	129	100	4.2
CJX2-F265	350	265	75	132	140	140	160	160	147	6.7
CJX2-F330	450	330	90	160	180	200	200	220	160	7.6
CJX2-F400	500	400	110	200	220	250	257	280	185	8.1
CJX2-F500	700	500	147	250	280	295	335	335	335	10.2
CJX2-F630	1000	630	200	335	375	400	400	450	450	17.1
CJX2-F800	1600	800	220	400	425	425	450	475	450	36.5

### Contour and installation dimension



CJX2-F115~330



CJX2-F800