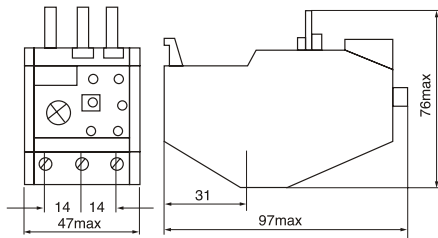


JRS2 series thermal relay

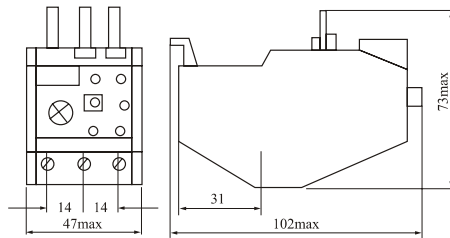


Type	Number	Setting range (A)	For contactor	Type	Number	Setting range (A)	For contactor	
JRS2-32/Z	1G	4~6.3	CJX1-32	JRS2-63/F	0K	0.8~1.25	CJX2-09~63	
	1J	6.3~10			1A	1~1.6		
	2A	10~16			1B	1.25~2		
	2B	12.5~20			1C	1.6~2.5		
	2C	16~25			1D	2~3.2		
	2D	20~32			1E	2.5~4		
	2Q	25~36			1F	3.2~5		
JRS2-45/Z	0A	0.1~0.16	CJX1-32 CJX1-38		1G	4~6.3		CJX1-85 CJX1-110
	0C	0.16~0.25			1H	5~8		
	0E	0.25~0.4			1J	6.3~10		
	0G	0.4~0.63			1K	8~12.5		
	0J	0.63~1			2A	10~16		
	0K	0.8~1.25			2B	12.5~20		
	1A	1~1.6			2C	16~25		
	1B	1.25~2			2D	20~32		
	1C	1.6~2.5			2E	25~40		
	1D	2~3.2			2M	32~45		
	1E	2.5~4		2T	40~57			
	1F	3.2~5		2P	50~63			
	1G	4~6.3		2H	55~80			
	1H	5~8		2W	63~90			
	1J	6.3~10		2X	80~110			
	1K	8~12.5		3H	90~120			
	2A	10~16		3J	110~135			
2B	12.5~20	JRS2-150	2H	55~80	CJX1-140			
2C	16~25		2W	63~90				
2D	20~32		2X	80~110				
2Q	25~36		3H	90~120				
2R	32~40		3J	110~135				
8M	36~45	JRS2-180F	3K	120~150	CJX1-170 CJX1-205			
JRS2-80/Z	1G		4~6.3	2H		55~80		
	8A		11~17	2W		63~90		
	2B		12.5~20	2X		80~110		
	2C		16~25	3H		90~120		
	2D		20~32	3J		110~135		
	2E		25~40	3K		120~150		
	2F		32~50	3L		135~160		
	2T		45~57	3M		150~180		
	2P		50~63	JRS2-400		2K	80~125	CJX1-110~400
	2V	57~70	3B		125~200			
2U	63~80	3C	160~250					
8W	70~88	3D	200~320					
JRS2-63/F	0A	0.1~0.16	CJX1-09~63	3E	250~400	CJX1-400		
	0C	0.16~0.25		3F	320~500			
	0E	0.25~0.4		3G	400~630			
	0G	0.4~0.63						
	0J	0.63~1						

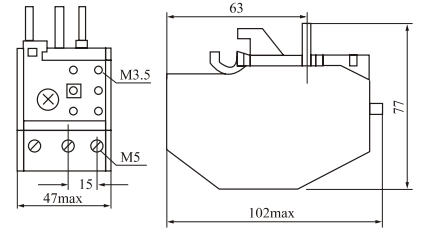
Outline and mounting dimension



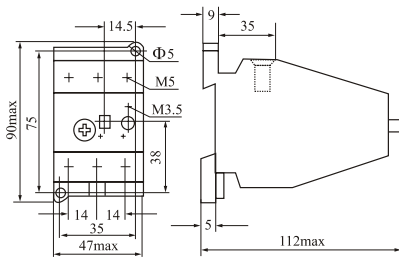
JRS2-12.5



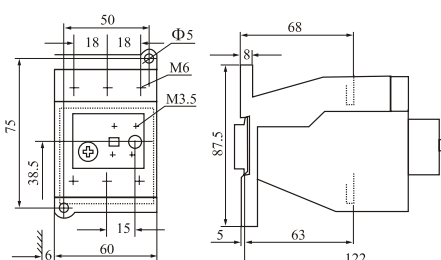
JRS2-25



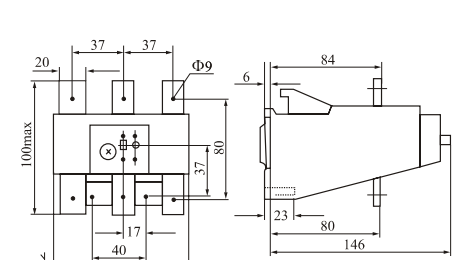
JRS2-32



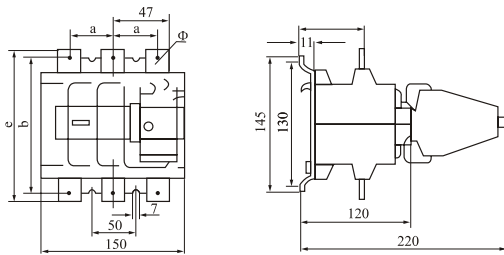
JRS2-63



JRS2-80



JRS2-180



JRS2-400-630

Type	JRS2-400	JRS2-630
A	50	52
B	146	156
C	70	71
ϕ	11	11
e	170	186
f	25×4	30×5

Accessories

Pic				
Description	JRS2 mounting base	JRS2 mounting base	JRS2 mounting base	Terminal block box
Application	Assembled with JRS2-12.5/Z to form a complete set	Assembled with JRS2-80/Z to form a complete set	Assembled with JRS2-45/Z to form a complete set	Assembled with JRS2-135/Z to form a complete set